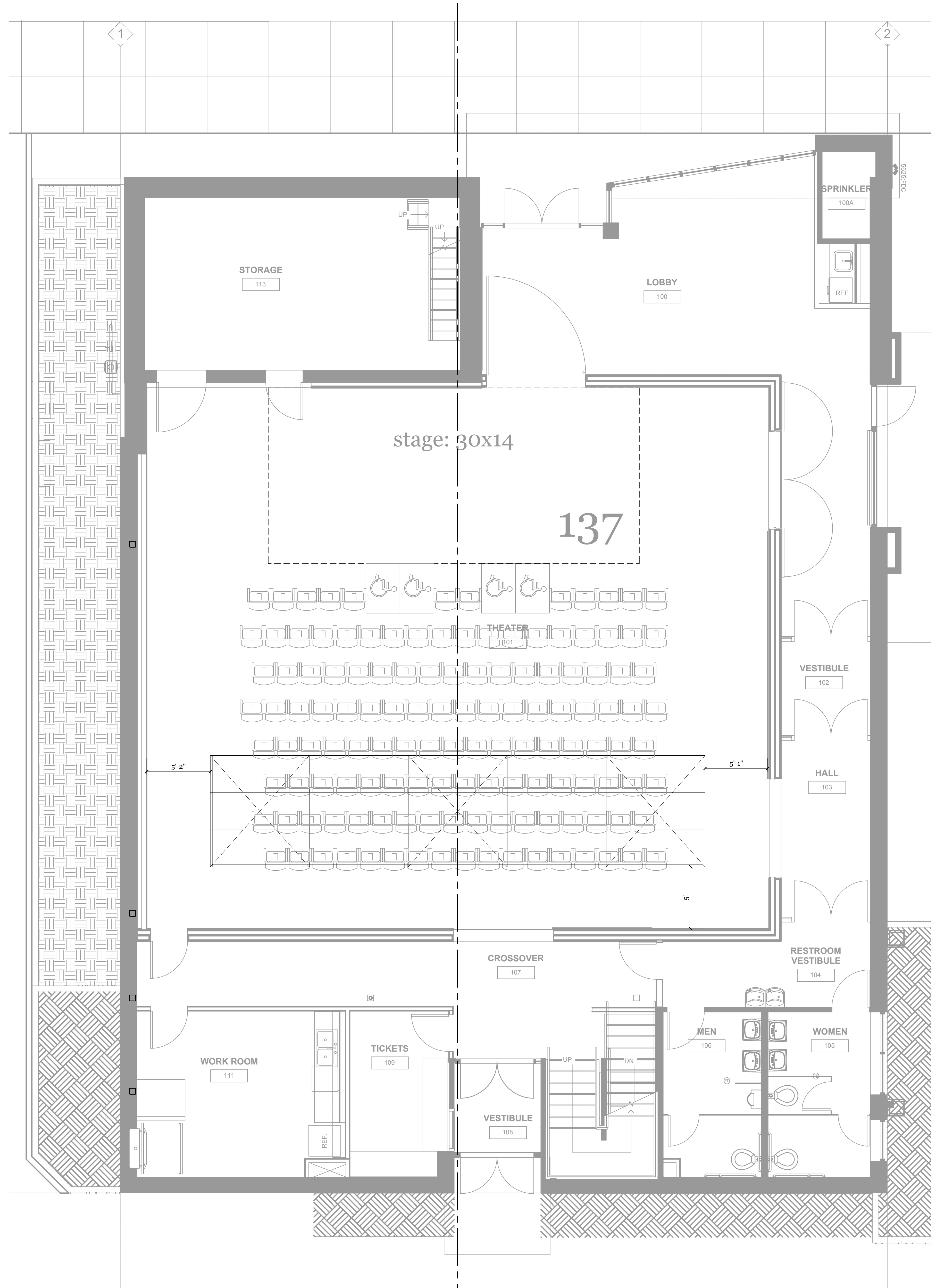
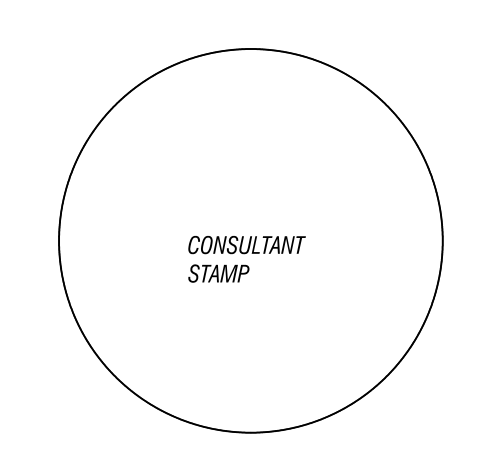


1 ARENA SEATING
1/4" = 1'-0"



2 END STAGE SEATING
1/4" = 1'-0"



The Shalleck Collaborative
Inc.
Planning and Design of Theatres and Production Systems
400 Montgomery St., Suite 2000
San Francisco, CA 94104
Tel: 415-565-4100
Fax: 415-565-0666

Bag & Baggage Theatre
300 E Main St
Hillsboro, OR
97123



REVISION NUMBER	REVISION DESCRIPTION	REVISION EDITION CLOSING DATE

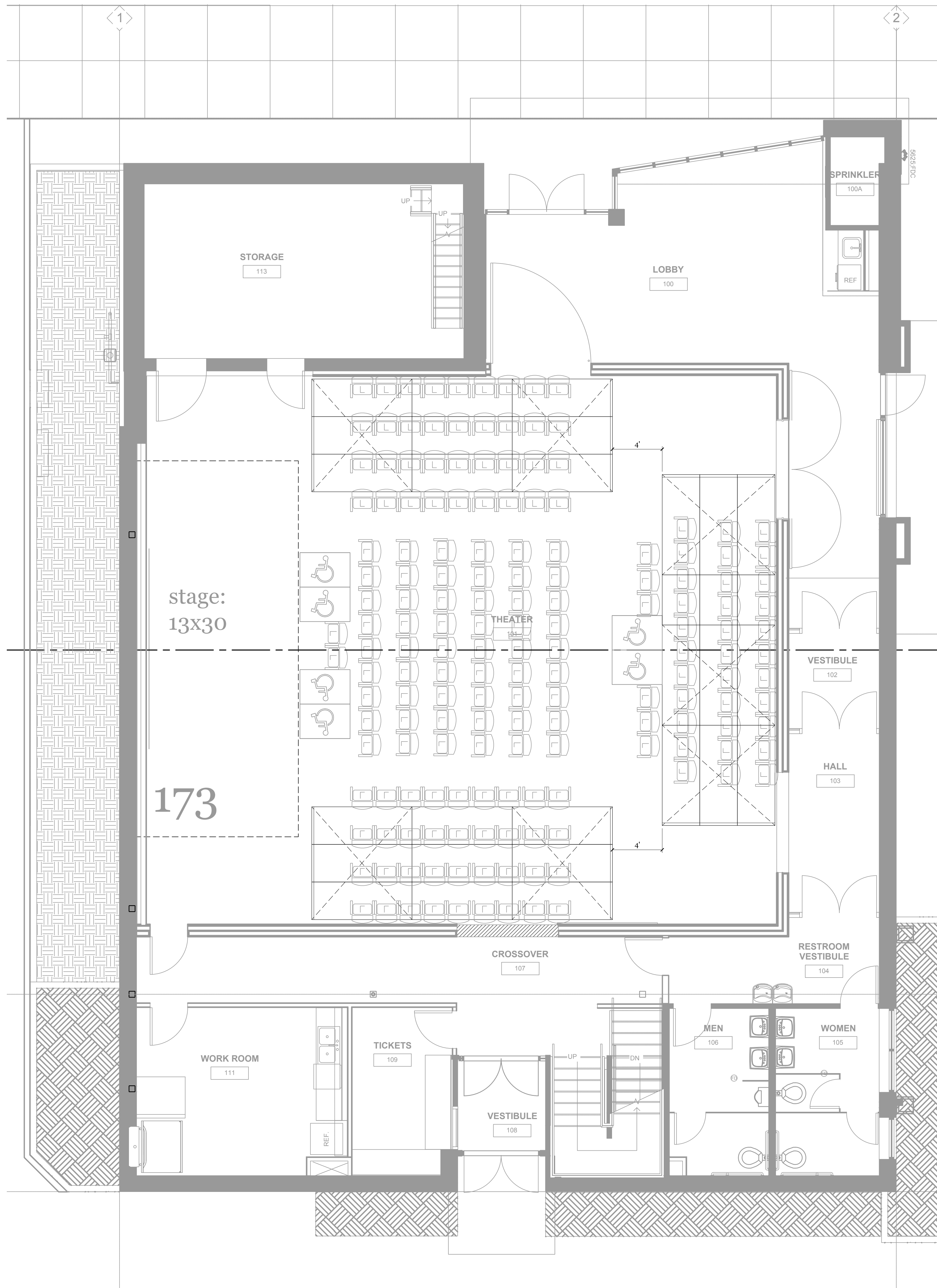
copyright 2016 the Shalleck Collaborative, Inc. ALL RIGHTS RESERVED.
THESE DRAWINGS ARE THE PROPERTY OF THE SHALLECK COLLABORATIVE, INC. AND ARE NOT TO BE USED OR REPRODUCED IN ANY MANNER, WITHOUT PRIOR WRITTEN PERMISSION.

date: 2016-01-05
drawn by: JC

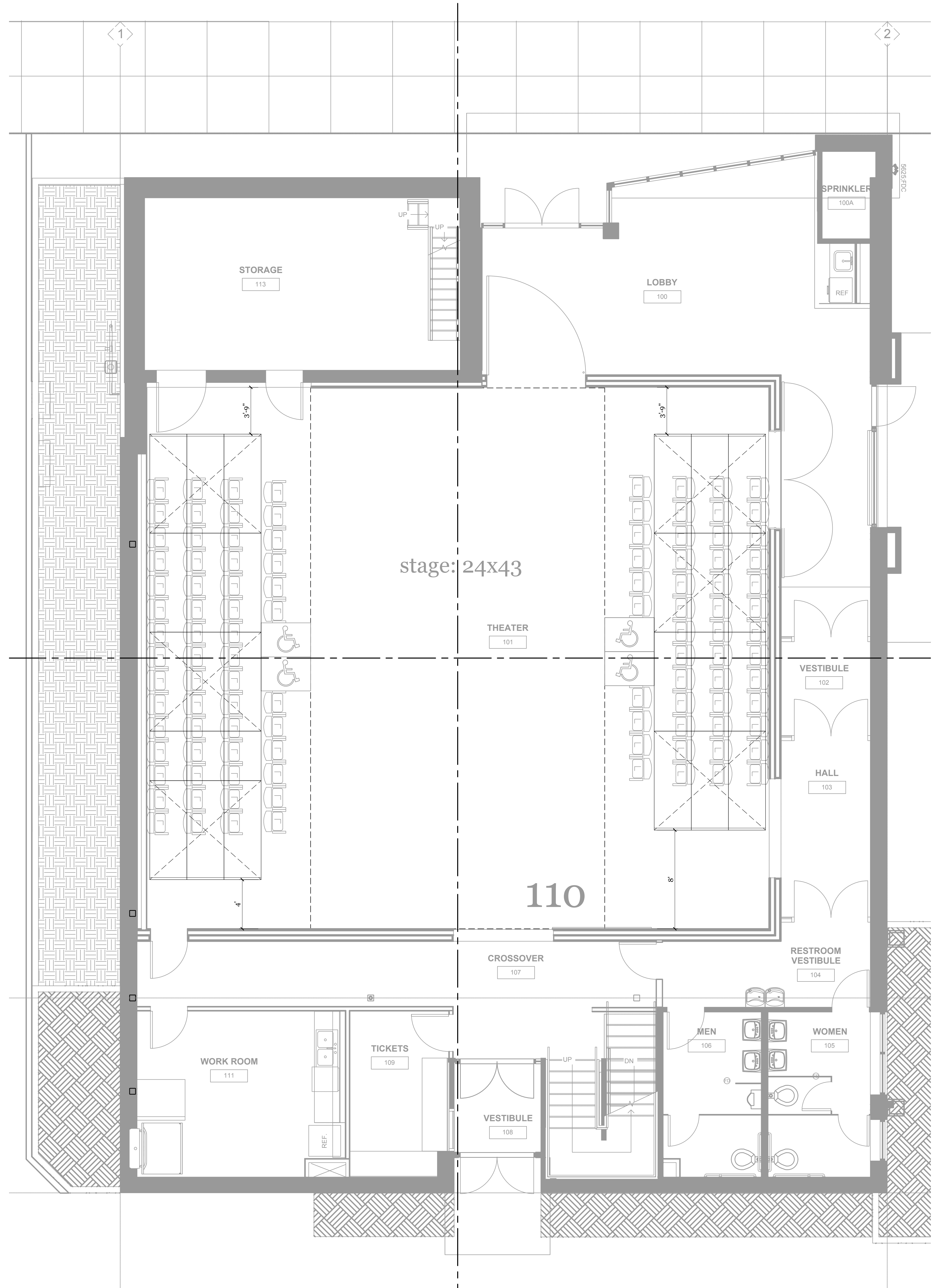
Sheet Title:
SEATING LAYOUTS

Sheet No.
PS.01

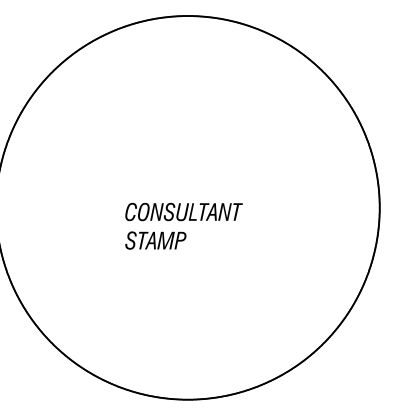
Job No.
4642-01
PRICING SET | 2016-01-05



1 CINEMA SEATING
1/4" = 1'-0"



2 TRANSVERSE/RUNWAY SEATING
1/4" = 1'-0"



The Shalleck Collaborative
Inc.
Planning and Design of Theatres and Production Systems
400 Montgomery St., Suite 2000
San Francisco, CA 94104
Tel: 415-565-4100
Fax: 415-565-0694

Bag & Baggage Theatre

300 E Main St
Hillsboro, OR
97123



REVISION NUMBER	REVISION DESCRIPTION	REVISION EDITION CLOSING DATE

copyright 2016 the Shalleck Collaborative, Inc. ALL RIGHTS RESERVED

THESE DRAWINGS ARE THE PROPERTY OF THE SHALLECK COLLABORATIVE, INC. AND ARE NOT TO BE USED OR REPRODUCED IN ANY MANNER, WITHOUT PRIOR WRITTEN PERMISSION.

date: 2016-01-05

drawn by: JC

Sheet Title:

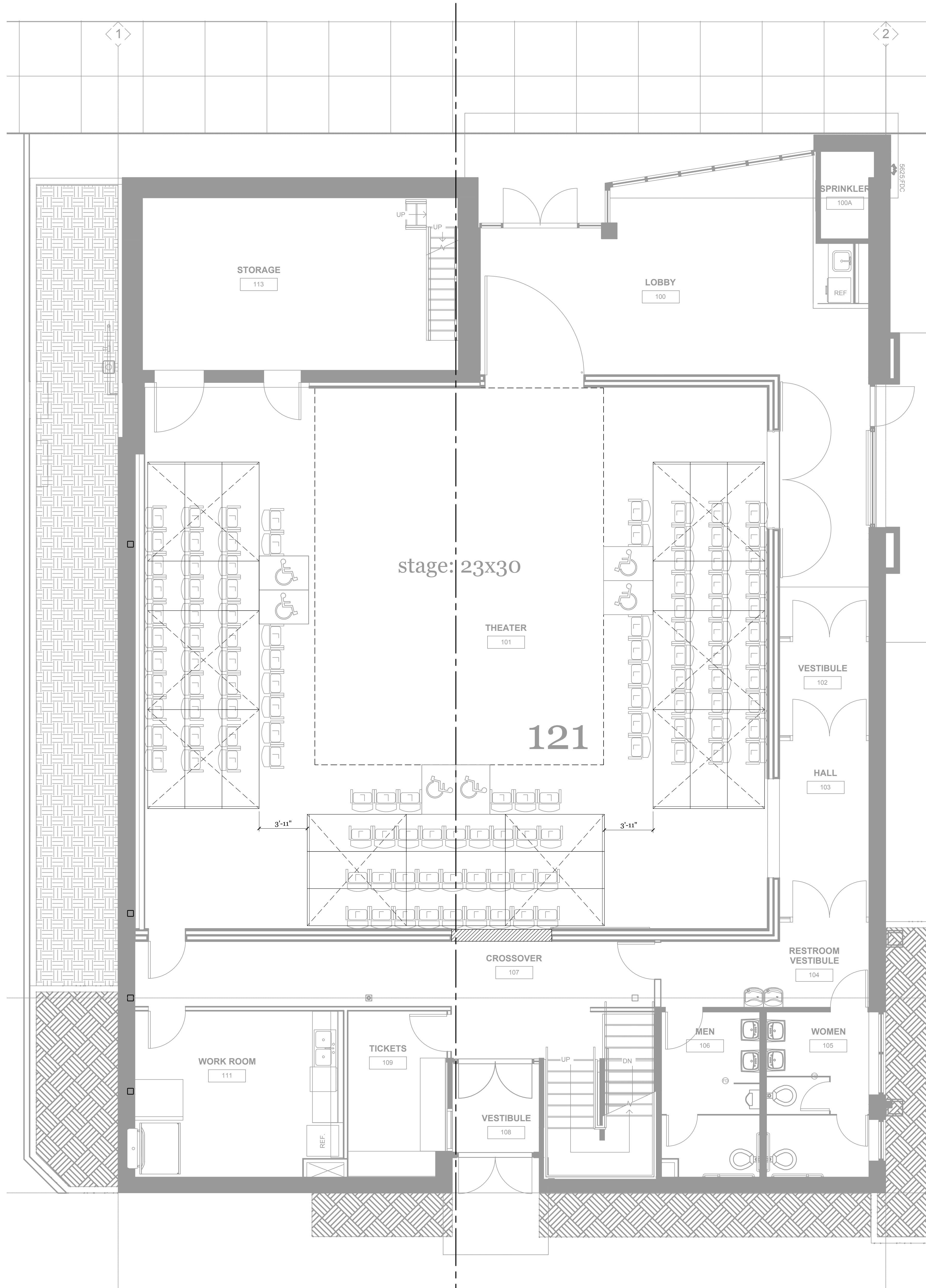
SEATING LAYOUTS

Sheet No.

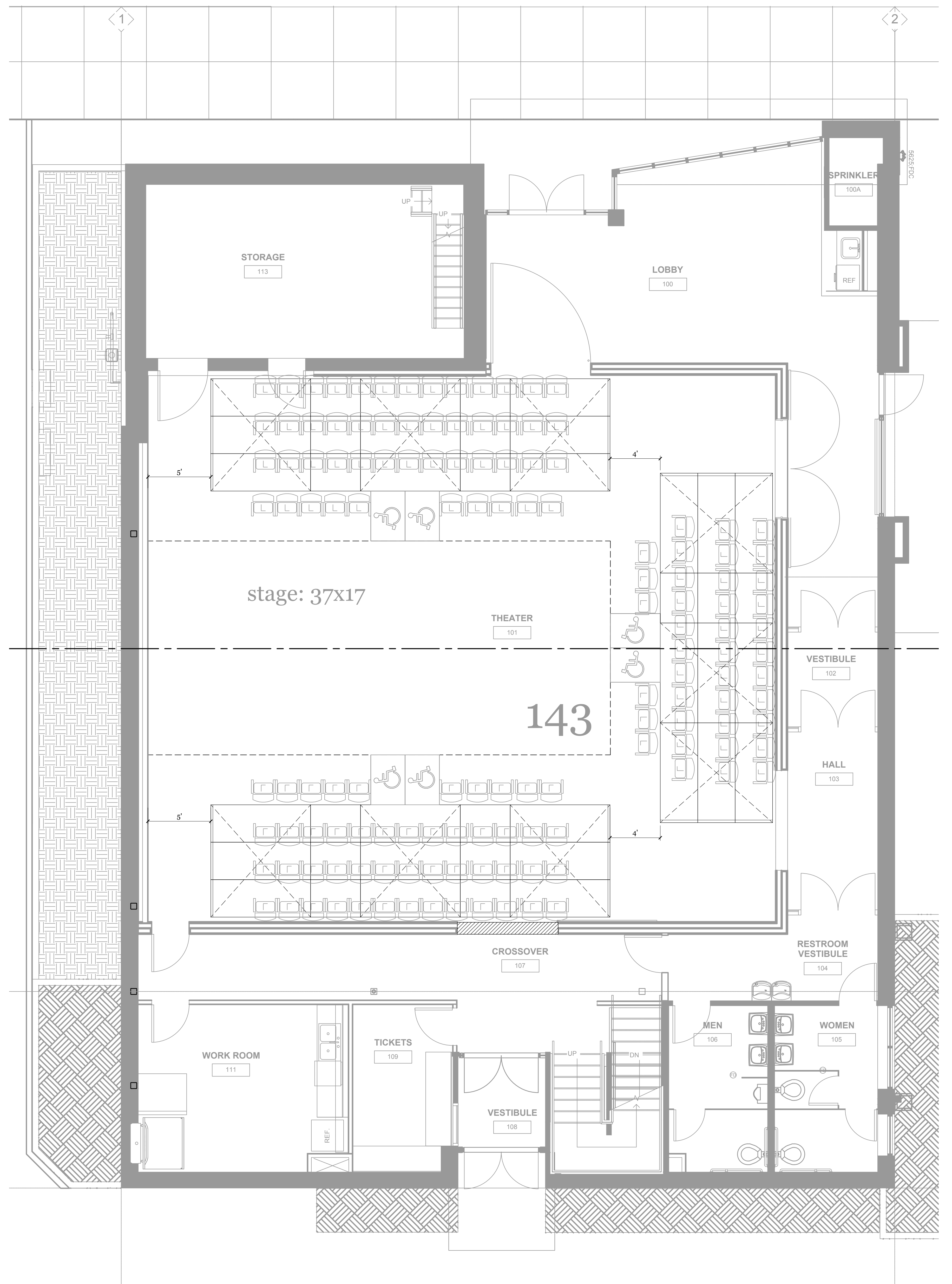
PS.02

Job No.

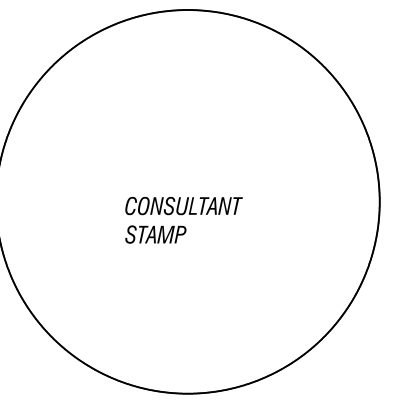
4642-01



1 THRUST SEATING - WEST
1/4" = 1'-0"



2 THRUST SEATING - NORTH
1/4" = 1'-0"



The Shalleck Collaborative Inc.
Planning and Design of Theatrical and Production Systems
400 Montgomery St., Suite 2000
San Francisco, CA 94104
Tel: 415-565-4100
Fax: 415-565-0666

Bag & Baggage Theatre

300 E Main St
Hillsboro, OR
97123



REVISION NUMBER	REVISION DESCRIPTION	REVISION EDITION CLOSING DATE

copyright 2016 the Shalleck Collaborative, Inc. ALL RIGHTS RESERVED

THESE DRAWINGS ARE THE PROPERTY OF THE SHALLECK COLLABORATIVE, INC. AND ARE NOT TO BE USED OR REPRODUCED IN ANY MANNER, WITHOUT PRIOR WRITTEN PERMISSION.

date: 2016-01-05

drawn by: JC

Sheet Title:

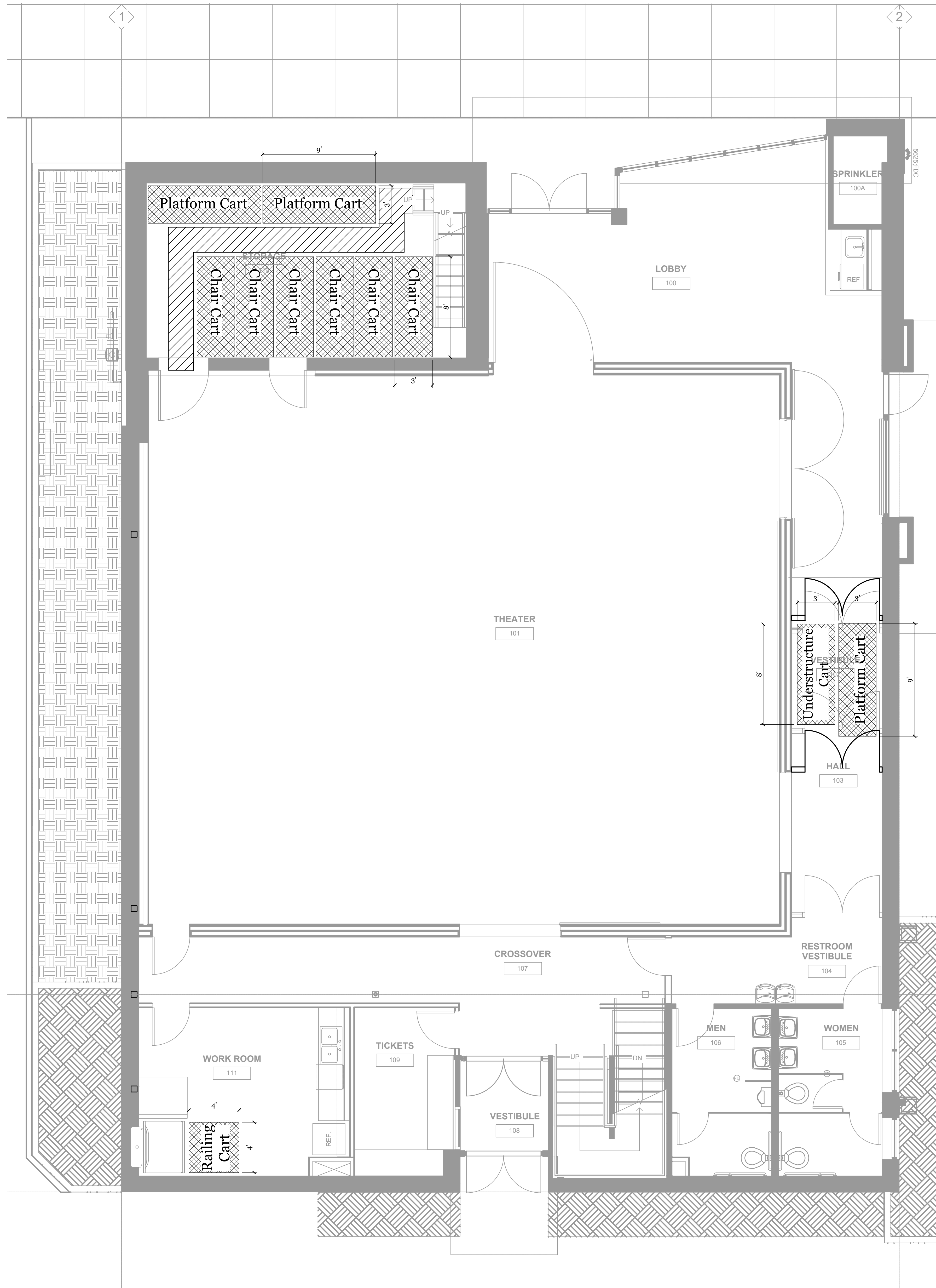
SEATING LAYOUTS

Sheet No.

PS.03

Job No.

4642-01



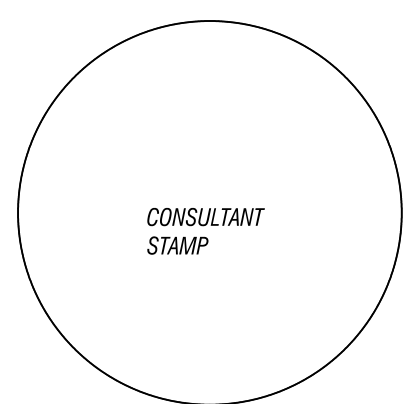
1 CART STORAGE PLAN
1/4" = 1'-0"

	ARENA	ENDSTAGE	CINEMA	TRANSVERSE	THRUST NORTH	THRUST WEST	TOTAL REQUIRED	CARTS REQUIRED
3x8 PLATFORMS	36	30	27	24	27	27	36	3
3x4 PLATFORMS	--	--	3	3	6	15	15	*
3 ROW UNDERSTRUCTURES	8	3	7	6	8	9	9	1
RAILINGS	24	16	18	12	18	18	24	1
CHAIRS	140	136	173	110	105	143	144	6

* 3x4 Platforms fit on 3x8 carts

* Chair cart quantity is based on using the Wenger standard portable Audience chair

2 EQUIPMENT INVENTORY
NTS



The Shalleck Collaborative
Inc.
Planning and Design of Theatres and Production Systems
400 Montgomery St., Suite 2000
San Francisco, CA 94104
Tel: 415-545-4100
Fax: 415-545-4104

Bag & Baggage Theatre

300 E Main St
Hillsboro, OR
97123



REVISION NUMBER	REVISION DESCRIPTION	REVISION EDITION	CLOSING DATE

copyright 2016 the Shalleck Collaborative, Inc. ALL RIGHTS RESERVED

THESE DRAWINGS ARE THE PROPERTY OF THE SHALLECK COLLABORATIVE, INC. AND ARE NOT TO BE USED OR REPRODUCED IN ANY MANNER, WITHOUT PRIOR WRITTEN PERMISSION.

date: 2016-01-05

drawn by: JC

Sheet Title:
SEATING LAYOUTS

Sheet No.

PS.04

Job No.
4642-01

PRICING SET | 2016-01-05