

The 2018/2019 Season is generously sponsored by

Ronni Lacroute
Pat Reser & Bill Westphal



This production is generously sponsored in part by

Dan Bergsvik & Don Hastler

MAY 2, 3, 4, 5, 9, 10, 11, 12, 16, 17, 18, 19

WELCOME TO BAG&BAGGAGE PRODUCTIONS!

We're so happy to have you join us here at The Vault Theater for tonight's show! As you may have heard, our Founding Artistic Director Scott Palmer has left B&B for his next adventure after nearly 15 years here in Hillsboro. Scott's distinctive artistic stamp has found its way onto nearly every piece of theatre we've produced in that time, and we will be carrying the rich legacy he has built far into our future.

So what does that mean for our audiences? As you've come to expect from B&B, we'll continue to do what we've always done: telling stories you know in ways you've never imagined;

inviting you to think outside the box with us; and working to forge connections with the entirety of our community, striving to have the voices, faces, and stories on our stage become more representative of all the people who call Hillsboro home.

I'm honored and excited to help guide Bag&Baggage forward, leading this company alongside our incredible Managing Director, Beth Lewis, and assisted by our fantastic staff, artists, and Board of Directors. It takes a village to create every single piece of theatre, and we've got a pretty great one here in Hillsboro. Thank you for being part of

that village, part of the conversation, and adding your presence as part of our ongoing story.



DIRECTOR'S NOTES

James Matthew Barrie — creator of the iconic “boy who wouldn’t grow up” — is a fascination of a human being. His own life marked by early loss and scarred by a mother who was unable to offer him the love and acceptance he so desperately needed, it is no great wonder that the intertwining themes of motherhood and abandonment are central to so much of his literary and dramatic work. Beyond this basic backdrop, both Barrie’s lived experiences and written imaginings mingle the acceptable with the unaccepted; the literal with the figurative; the traumatic with the delightful; and the creative with the destructive.

Upon Barrie’s death in 1937, Lady Cynthia Asquith, fellow writer and English socialite, described him saying:

“He tended to wander in some entrancing borderland between fantasy and fact. For him the frontier between

these two realms was never very clearly marked.”

This borderland, this “frontier between realms” is very fittingly the territory of Jeremy Bloom’s *Peter/Wendy*. In taking on this story that has been part of Western culture’s collective consciousness for more than a century, Bloom aims to strip away all the excess, revealing the underlying complexities that invite us to inhabit the more uncomfortable spaces between the things we know for certain.

And in a 2019 America marked more than ever by polarized social and political viewpoints, I can’t imagine a more crucial place to explore than this territory “between”.

When we are able to step away from the assumptions that keep us safe and comfortable, what might we be able to

learn and gain? When we lean into the unknown with a desire to truly explore and an openness to the possibility of change, how much more empathetic might we become? In short, if we are able to let go of the polarities that we cling to, might we be able to create a better society for us all?

This production invites us to set aside the things we think we know in favor of the things we could possibly discover; to lean into the areas that are less certain and less comfortable; and to traverse our imaginations in this new territory together. In the words of J.M. Barrie, this could be an awfully big adventure...

Cassie Greer,
Director

ABOUT BAG&BAGGAGE

Bag&Baggage’s mission is to crack open and explore the classics of world literature through innovative and provocative theatrical productions, connecting these great works to the people in our diverse community in a way that affirms our shared humanity. As the only professional performing arts organization in Hillsboro, we believe we have a responsibility to connect our work to the lives and experiences of the people who call our community home.



Cassie Greer
Artistic Director

Beth Lewis
Managing Director

Arianne Jacques
Patron Services Manager

Alec Lugo
Marketing Assistant
Graphic Designer

TS McCormick
Event Manager

Jim Ricks-White
Technical Director
Resident Lighting Designer
The Vault Theater Facilities Manager

Melissa Heller
Resident Costume Designer

Ephriam Harnsberger
Company Stage Manager

Board of Directors
Carol Beauchamp
Julie Case
Karl Citek
Kathy Gaona
Cassie Greer
Laura Hoover
Tom Hughes
John Jacques
Beth Lewis
Patricia Logan
Liz Manser
Mori Mirashrafi
Linda Morrisson
Gayle Nachtigal (chair)
Devinka Peiris
Segun De Silva
Jan Simmons
Donna Swanson
Aditi Vyas



AnchorPointe Graphics is a proud
supporter of Bag&Baggage

Bag&Baggage Productions presents

Peter/Wendy by Jeremy Bloom

directed by Cassie Greer

CAST

Peter	Phillip J. Bernst
Wendy	Kayla Kelly
A Lost Boy/A Mermaid	Jacquelle Davis
The Tiger Lily	Cambria Herrera
Tinker Bell	Jeremy Sloant
Mrs. Darling/Hook	Kymberli Colbourne†
Mr. Darling/Smee	Justin Charles

CREW/PRODUCTION TEAM

Director	Cassie Greer
Costume Designer	Melissa Heller
Technical Director & Scenic Designer	Jim Ricks-White
Assistant Technical Director	TS McCormick
Lighting Designer & Projection Designer	Jeffery A. Smith
Sound Designer & Composer	Evan D. Lewis
Stage Manager	Ephriam Harnsberger
Assistant Stage Manager	Renée Zipp
Props Master	Kai Hennig^
Scenic Artist	Tyler Buswell
Light Board Operator	Michael Spross
Sound Board Operator	AJ Ark

‡= member of the Bag&Baggage Resident Acting Company,
generously sponsored by Linda Morrisson & Andrew Hoffmann

†= Bag&Baggage Associate Artist

^= Bag&Baggage Emerging Artist, generously sponsored by Brad & Linda Needham

Please remember: turn OFF your phone, do not text during the performance,
and photography or recording of this performance are strictly prohibited.

This performance lasts 2 hours, including one 15-minute intermission.

Produced by special arrangement with Playscripts, Inc.
(www.playscripts.org)

The 2018-2019 Season is presented by

Ronni Lacroute

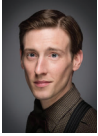
The 2018-2019 Season is generously sponsored by
Pat Reser & Bill Westphal and The Hillsboro Hops



This production is generously sponsored in part by
Dan Bergsvik & Don Hastler

ACTOR & CREW BIOS

ACTOR BIOGRAPHIES



PHILLIP J. BERNS PETER

Phillip holds dual degrees in Theatre Arts and Advertising from Marquette University in Milwaukee, WI, from whence he hails. This is Phillip's third year as a proud Associate Artist of Bag&Baggage. You may have seen Mr. Berns' previous Bag&Baggage productions, notably *Spinning Into Butter* (as Greg Sullivan); *A KBNB Kristmas Karol* (as Heinrich Huber-Hoffman); *Dial "M" for Murder* (as O'Brien etc.); *Twelfth Night of the Living Dead* (as Valentine); and *Shakespeare's R&J* (as Student 2/Juliet). Other companies Phillip has worked for include the Post5 Theatre (where he was a founding Company Member), Portland Actors Ensemble, Willamette Shakespeare, Milwaukee Repertory Theatre, and First Stage Milwaukee, where he made his professional stage debut as Michael Darling in *Peter Pan* way back in 1996. Other Favorite roles include: *Equus* (as Alan); *King Lear* (as The Fool); *Stupid Kids* (as Neechee); several iterations of the Portland sketch phenomenon that is *Spectravagasm*; and in his annual one-man production of *A Christmas Carol* (as the Storyteller). Phillip works as a Problem Solver and Happiness Maker for Ruby Receptionists, and would like to thank Cassie, the cast and crew, and the girl who inspires him daily.



JUSTIN CHARLES MR. DARLING/SMEE

Justin Charles is a bilingual Latinx transplant to Portland, who originally hails from Texas and has traveled the country since studying theatre-forensics at The University Of Mississippi (Ole Miss), participating in various activities. Thy is making their Bag&Baggage debut, and is particularly interested in exploring the depths of Neverland in this moving interpretation. Thy has recently collaborated with Theatre Vertigo, Portland Center Stage, Oregon Children's Theatre, Oregon Zoo, Milagro, Merry-Go-Round Playhouse, MadCap Puppets, Cortland Repertory Theatre, Western Playhouse*, and spends their time writing, expanding resume skills, crafting jokes, and developing fictional band names. Thy is an avid reader, commemorative stamp collector, music lover, and suffers from restless-leg syndrome. Thy would like to continue to pursue a life of creativity in the arts.



KYMERLI COLBOURNE MRS. DARLING/HOOK

Kymerli earned a BA in Theatre Performance from Scripps College. As a member of the Bag&Baggage Resident Acting Company, she is grateful to have had so many opportunities to be seen onstage for Bag&Baggage from *The Island In Winter* or *La Isla En Invierno* (as Ma); *Bell, Book And Candle* (as Miss Holroyd); *Blithe Spirit* (as Madame Arcati); *Charles Dickens Writes A Christmas Carol* (as Scrooge); *Spinning Into Butter* (as Sarah Daniels); *The Graduate* (as Mrs. Robinson); to *Moby Dick*, *Rehearsed* (as Ahab/Father Mapple). Kymerli has also performed with The National Theatre of the Deaf, The Oregon and Seattle Children's Theatres, Book It Rep, Seattle Shakespeare Festival, The Broadway Rose Theatre Company, and The Oregon Cabaret to name just a few. When not on-the-boards, you can find her behind the microphone working as a voice over actor. Kymerli is thankful to friends and family for their unending love and support, her husband and colleague Jim Ricks-White for his vital contributions

to the work at B&B, and to the entire Bag&Baggage family for giving her such a generous, joyful, and challenging artistic home.



JACQUELLE DAVIS A LOST BOY/A MERMAID

Jacquelle studied acting at Willamette University. She is thrilled to be making her first appearance in a Bag&Baggage production. You may have seen her in *The Delays* (as Haskell) at Theatre Vertigo; *An Interlude in Birdsong* (as Lorelai) with Rutabaga Story Co; and she recently closed a two-woman sketch comedy, *JK Squared* (as herself), which she co-wrote, produced and starred in. Jacquelle is a member of No Filter Improv and a volunteer at Pulp Stage. She is a huge Karaoke enthusiast and loves reading and long walks on the beach. She would like to thank her family and friends for creating such a supportive environment that encourages her to make more art.



CAMBRIA HERRERA THE TIGER LILY

Cambria holds a BA in Acting and Directing from George Fox University. Recent credits include: *As One* at Portland Opera (Assistant Director); *The Little Mermaids Project* at Enso Theatre Ensemble (Director and co-producer); *Proof* at Valley Repertory Theatre (Director); *Balkan Women* at George Fox University (Director); and *Twelfth Night* at George Fox University (as Antonio). Their next project is directing *Romeo and Juliet* at Penguin Productions (Newberg, OR) this summer. They are also involved in the Portland community as the facilitator/co-founder of AGE's Women of Color in PDX Theatre Collective and a leadership committee volunteer for PDX Latinx Pride. Cambria would like to thank Mom, Dad, Nicky, Kayla, Melissa, Amberly, Audrey, Blake, Eli, Caitlin, Yasmin, Sara, Sierra, JeanneAnn, Taylor, and Alanna for their constant support.



KAYLA KELLY WENDY

Kayla Kelly is from Houston, Texas and holds a Bachelors of Arts from Stephen F. Austin State University. After graduating college, she joined Portland Playhouse's Season 10 apprenticeship. This is her first show with Bag&Baggage, and she is excited to be working with the company. You may have seen her in *The Killing Fields* (as Iphigenia) with Orphichips; *Robin Hood* (as Shirley Sheep) with JANE : a theatre company, *Romeo and Juliet* (as Benvolio) with PAE; in the original cast of *Scarlet* (as Mme Dudley); and *A Christmas Carol* (as Fan/Elizabeth) with Portland Playhouse. Kayla Kelly enjoys dabbling in stand up comedy, writing, and finding creation in everyday life. Special thanks to my parents, and everyone who made this play possible.



JEREMY SLOAN TINKER BELL

Jeremy received his BFA in Music and Theatre from Portland State University and has been performing in the Portland/Metro area for over 15 years. He is thrilled to be an Associate Artist with Bag&Baggage again this season. He last performed with Bag&Baggage in *Farndale Avenue...Murder at Checkmate Manor* (as Mercedes Blower); *KBNB Miracle on 43rd Street* and *KBNB Kristmas Karol* (as Gilroy Gildersleeve AKA Patrick Paulson); and with Liberace in *Cabaret Cupid*. He has tread the boards of Anonymous Theatre Company, Broadway Rose Theatre Company, Clackamas Repertory Theatre, Lakewood Theatre, Many Hats Productions, Mock's

Crest Productions, Opera Theatre Oregon, Pixie Dust Productions, Portland Opera, Red Shoe Productions, Staged! Musical Theatre, and Stumptown Stages. Other favorite roles include: *Godspell* (as Jeremy (himself)); *You're a Good Man Charlie Brown* (as Charlie Brown); *Smokey Joe's Cafe* (as Michael); *La Cage Aux Folles* (as Mercedes Bendz); and *Plaid Tidings* (as Frankie). When not on stage, Jeremy works as the Director of Continuing Education at National University of Natural Medicine, is on the Board of Directors for Willamette Valley Development Officers, and is planning his wedding this summer to his fiancé, ChadWick! Enjoy the magic of this play and create your own happy thoughts!

CREW BIOGRAPHIES



J.M. BARRIE AUTHOR

Sir James Matthew Barrie, 1st Baronet (1860-1937), was a Scottish novelist and playwright, best remembered today as the creator of Peter Pan. He was born and educated in Scotland, graduating from the University of Edinburgh with an M.A. in literature, and then moved to London, where he wrote a number of successful novels and plays. In London, he met Arthur and Sylvia Llewelyn Davies and their boys, who inspired him to write about a baby boy who has magical adventures in Kensington Gardens (included in *The Little White Bird*), then to write *Peter Pan*, or *The Boy Who Wouldn't Grow Up*. Although he continued to write successfully after that, *Peter Pan* overshadowed his other work. Barrie unofficially adopted the Davies boys following the deaths of their parents; he was made a baronet by George V in 1913, and a member of the Order of Merit in the 1922 New Year Honours. Before his death, he gave the rights to the Peter Pan works to Great Ormond Street Hospital for Children in London, which continues to benefit from them.



JEREMY BLOOM PLAYWRIGHT

Jeremy Bloom directs original theatrical adaptations including *La Boheme (Spoken)*, *LIVE Mermaids LIVE*, and *Leaves of Grass (Nude)*. As artistic director of Rady&Bloom, new film and theater work with Brian Rady includes *The Orange Person*, *The Girl of The Golden West*, and *The Upper Room* (these projects have appeared in collaboration with Ars Nova, The New Ohio, and The Ice Factory, funded in part by Manhattan Community Arts Fund). Directing work with new writers include Alex Borinsky on *Of Government* (Clubbed Thumb) and *Ding Dong It's The Ocean* (HERE). Opera world premieres include Center for Contemporary Opera, Guerrilla Opera, and the Avant Media, and poetry plays include *Walt and Emily: Between the Rooms* by Jonathan Cott. Assistant credits include: The Met, Broadway, and regional theaters (for Mary Zimmerman, Liz Swados, Alex Timbers). Mr. Bloom is an artist-in-residence at the cell and is a HERE Arts HARP Artist. He is a Drama League Directing Fellow, an EST Resident Director, Soho Rep Lab Director, a TS Eliot director at The Old Vic, and an alum of Northwestern University's Performance Studies Program. radyandbloom.com



TYLER BUSWELL SCENIC ARTIST

Tyler Buswell is a proud drag queen, actor, and visual artist based in Portland. Recent set design credits include *Death and the Maiden*, *Blithe Spirit*, *Deathtrap*, and *Bell, Book and Candle* all at Bag&Baggage

ACTOR & CREW BIOS

Productions; *Quietly* with Corrib Theatre; and *Of Good Stock* with Lyon Productions, among many others. He has been nominated for Best Set Design at the BroadwayWorld Awards four times, and has worked as an artist for Artists Repertory Theatre, Portland Center Stage, Third Rail Repertory, Theatre Vertigo, Oregon Children's Theatre, and others.



CASSIE GREER

ARTISTIC DIRECTOR & DIRECTOR

Cassie is thrilled to be taking on Neverland with the fantastic cast and crew of *Peter/Wendy*! She has been part of more than 30 Bag&Baggage projects since joining the company in the 2011-12 Season, having appeared on stage in *The Great Gatsby* (as Daisy Buchanan); *Brontë* (as Charlotte Brontë); and the title character in *Coriolanus*, among many others. On the directing side, you've seen her work in *Death and the Maiden*, *Parfumerie*, *As You Like It* or, *Love In A Forest* (which she also adapted), and with the Emerging Artist Program. In addition to assistant directing a handful of shows here at B&B; her other directing work has most recently been seen at Fertile Ground '13 and the San Francisco Fringe '14 (*Cinnamon and Cigarettes*); Spotlight Musical Theatre Academy; and B&B's 2013 touring production of *A Christmas Carol*. Cassie received her training in the BA Theatre program at Goshen College and the MFA Acting program at Florida Atlantic University, and is a certified Assistant Teacher of Fitzmaurice Voicework®. She wouldn't be here without Danny, and is incredibly grateful to her family and friends for their continual love, support, and energy.



EPHRIAM HARNSBERGER

STAGE MANAGER

Ephriam completed his Bachelor of Fine Arts Degree in Omaha, Nebraska at Creighton University. This is his fourth season with Bag&Baggage. Productions include: *The Island In Winter* or *La Isla en Invierno* (SM); *Bell, Book and Candle* (SM); *Deathtrap* (SM); *As You Like It* (SM); *Blithe Spirit* (SM); *Death & The Maiden* (SM); *Charles Dickens... Christmas Carol* (SM); *Farndale... Checkmate Manor* (SM); *Spinning Into Butter* (SM); *Romeo&Juliet/Layla&Majnun* (SM); *Brontë* (SM); *Parfumerie* (SM); *The Drowning Girls* (SM); *The Graduate* (SM); *Coriolanus* (SM); *Emma* (ASM); *The Best of Everything* (ASM); *The Lady Aoi* (SM); *Othello* (SM); *The South Omaha Stories* (SM/AD); *The Spitfire Grill* (SM/AD); *The Tempest* (ASM); *Complete Works of William Shakespeare [abridged]* (ASM); *Titus Andronicus* (ASM); *Twelfth Night* (ASM); *Phantom* (AD); *Dames at Sea* (SM); *Almost, Maine* (SM); *Julius Caesar* (ASM); and *Comedy of Errors* (ASM). Although he is usually found backstage, he has also appeared onstage in *Cabaret* (as Emcee); *Noises Off!* (as Selsdon); and *Urinetown* (as Bobby). Ephriam is elated to work alongside the fierce cast and crew of *Peter/Wendy*. When he is not wandering about the stage, Ephriam also enjoys cooking, camping, hiking, and singing silly songs with his sisters. He would like to thank Bag&Baggage, Nik, Rosemary, and his parents.



MELISSA HELLER

COSTUME DESIGNER

Melissa splits her time between heading the costume shop and designing costumes at Pacific University and designing for local area theater companies. Melissa holds a B.S. in Apparel Design from Oregon State University, where her interest in costumes for theater was born. She began her

work with Oregon State University in 2006 and helped design their productions until she graduated in 2008 and moved to Portland to pursue her career in the apparel industry. Melissa quickly decided that consumer apparel design was not the path she wanted to pursue, so she began work with Oregon Ballet Theater in 2010 where she was involved with all productions for the 2010/2011 season. Her recent works include *A Christmas Carol*; *As You Like It*; *Romeo & Juliet*; *Layla & Majnun*; *Deathtrap* with Bag&Baggage Productions, *HIDE*; *Silent Sky* with Pacific University, and *Pippin* with Lakewood Center for the Performing Arts. Melissa thanks Bag&Baggage Productions for this engaging partnership.



BETH LEWIS

MANAGING DIRECTOR

Beth has over fifteen years of experience in theatre administration and management. She most recently served as Managing Director of Curious Comedy Theater, Portland's only nonprofit comedy theater. She moved back home to the Portland area in 2013, after being in Los Angeles for five years working at The Pasadena Playhouse, where she ended her tenure there as their Annual Giving Manager. Before that, she lived in New York City, where she served as the Director of Development for The Looking Glass Theatre, and the Associate of Special Events for Sonnet Repertory Theatre. In addition to her work at Bag&Baggage, she is currently the Board President of the Portland Area Theatre Alliance. She also holds a BA in Theatre from Connecticut College and is a Core Company Member of the Original Practice Shakespeare Festival. Thanks to her family and friends and to Evan and Max for their love and support.



EVAN D. LEWIS

SOUND DESIGNER & COMPOSER

Evan Lewis, born and raised in Portland, Oregon, received his Masters in Music in composition from Mannes College, The New School (NYC) in 2008. He graduated with a BA with honors in music composition from Whitman College in 2003, and completed the Film Scoring Certificate program at UCLA in 2009. He was a winner of the Jean Schneider Goberman/Alaria Competition, and had his orchestral work *Alecto* premiered at the 2008 Contemporary Music Festival by the Mannes Orchestra. He has also studied with Conrad Cummings at Juilliard, Chen Yi at California Summer Music, and Pulitzer Prize-winners Paul Moravec and Jennifer Higdon at Mannes College. His opera, *The Witch of the Iron Wood* (with libretto by playwright Claire Willett), received an in-progress staged reading in 2013 as part of the Fertile Ground New Works Festival, where it was selected as an Editor's Pick by Portland Monthly. Other works for the theater include incidental music for *A Dream Play* by Strindberg (Dalliance Theater, NYC). Evan is on the board of Cascadia Composers, is a proud member of ASCAP, and plays piano & euphonium. Thanks, as always, to his family, to Beth, and to Max for their love and support.



JIM RICKS-WHITE

TECHNICAL DIRECTOR & SCENIC DESIGNER

With over 30 years in theatre, Jim is pleased to be part of the staff here at Bag&Baggage, adding Vault Facilities Manager to his duties as Technical Director and Lighting Designer. Jim has worked professionally as a Production Stage Manager and Stage Manager

(Civic Light Opera Seattle, Spokane Interplayers, Stumptown Stages); Technical Director, Lighting and Set Designer (Innovation Theatreworks, Tower Theatre, Portland Actors Ensemble); Properties Artisan and all-around Theatre Tech (the list goes on and on...) — in venues as small as 99-seat black box theatres, and as large as the Olympic Stadium for the 2012 London Olympics and Paralympics as well as lighting the World's Largest Building, the Burj Khalifa in Dubai, for New Year's Eve 2018. Basically, he has yet to meet a theatre tech job he didn't like — or at least enjoy! Jim has also taught technical theatre at PCC Sylvania and has held numerous administrative positions in theatre during his career. In his free time, Jim loves to travel, explore great food, and enjoys working off steam swinging a German longsword or Military saber at his local HEMA gyms, Indes Western Martial Arts and NW Armizare. Jim looks forward to being able to help nail down some good storytelling and bring the 2018-2019 B&B season to light!



JEFFERY A. SMITH

LIGHTING DESIGNER & PROJECTION DESIGNER

Jeffery is happy to be working with this production at Bag&Baggage. He comes from 20 years with the Walt Disney company. He worked as a technician and a designer at Disneyland. He has also worked as an independent designer for many productions. This past spring he did the lighting design for the Lone Star Ballet's production of *Swan Lake*. Jeffery is the lead technician for productions around the world that use Syncrolites, having just returned from doing the Syncrolites for the New Year's celebration in Dubai. Jeffery has also designed the projection system that is being used in tonight's production, it is now a permanent addition to the technical equipment here at the Vault Theater.



RENÉE ZIPP

ASSISTANT STAGE MANAGER

Renée earned a Bachelor of Fine Arts from Oregon State University in 2015. Last season she was an Emerging Artist for Bag&Baggage. You may have seen her on the B&B stage in *Lotte Grimm's Cinderella: A Story of Sisterhood and Magic* (as Katie Woodencloak / Dortchen Wild / Big Gobbler) adapted by the 17/18 EA cohort. Behind the scenes, she was the ASM for *Charles Dickens Write A Christmas Carol* and sound designer for *Blithe Spirit*. Renée's favorite performances include: *No Direction Home* (as Mara) with 5 to 1 Theatre; *Those Scary Reds!* (as Woman/Mother) with 5 to 1 Theatre; and *Love's Labour's Lost* (as Katherine) in OSU's Bard in the Quad. Offstage, Renée enjoys spending time with her puppy Sunny, writing, and her work as a freelance marketer. reneezipp.com

THANK YOU, DONORS

Your financial support is CRUCIAL to our success, and we are deeply grateful for your generous contributions. Find out more about the benefits of becoming a **BAGGAGE HANDLER** online today at www.bagnbaggage.org!

(For contributions made between April 1, 2018 and April 1, 2019)

IMPRESARIO \$10,000 AND ABOVE

Karl Citek & Patricia Logan
City of Hillsboro
The Collins Foundation
Daryl L. and Patricia L. Swenson Fund of the Oregon Community Foundation
Steve & Maggie Dixon
Mike & Laura McMurray
Ronni Lacroute
Meyer Memorial Trust
James F. and Marion L. Miller Foundation
Marilyn & Ron Nutting
Oregon Cultural Trust
Regional Arts & Culture Council, including support from Washington County
Pat Reser & Bill Westphal
The Reser Family Foundation

EMISSARY \$5,000 AND ABOVE

Anonymous
Dan Bergsvik & Don Hastler
Ralph & Marilynn Helzerman
Hillsboro Arts and Culture Council
Andrew Hoffmann & Linda Morrisson
The Jackson Foundation
The Kinsman Foundation
Fred & Gayle Nachtigal
Stanley Palmer
Ritz Family Foundation

AMBASSADOR \$2,500 AND ABOVE

Benevity Community Impact Fund
Heather Casto & William Swindells
Segun & Devinka De Silva
Robert Dunstan & Gayle Miller
Scott Eisenstein & Kelly Ritz-Eisenstein
Kathy Gaona
Grant T. Johnson Memorial Fund at the Hillsboro Community Foundation
Lane Hickey
Tom & Gayle Hughes
Eric & Diane Lewis
Linda & Brad Needham
Oregon International Air Show
Jan Simmons
Bill & Rita Tomison

CONCIERGE \$1,000 AND ABOVE

Anonymous (2)
Carol A. Beauchamp
Sara Behrman & F.X. Rosica, in honor of Scott Palmer
Ellyn Bye
Steve & Joan Callaway
Dale & Julie Case
Carole Cotten-Figueiredo & John Figueiredo
Cultural Coalition of Washington County

Emily Georges Gottfried
Fund of the Oregon Jewish Community Foundation
George & Donna Evans
Family Justice Center of WA County
Steve & Marilyn Gray
Rhonda Handly & Susan Norwood
Pete & Sue Harris
Hillsboro Bar & Grill
Inukai Family Foundation
Ken & Anne Jackson
Annemarie & John Jacques
Jeff Kishlock & Anne Brennan
Leonard A. & Susan Magazine - Real Estate, Inc.
Network for Good
Opis Architecture LLP
Richard B. Siegel Foundation
Tom Tiernan
David & Jann Weber

PORTER \$500 AND ABOVE

Alice Bartelt
Jim & Vicki Currie
Diane Dittmer
Nan Frederick
David Heath
Scott & Sonya Hoatson
Kevin Hoover & Nita Brueggeman
Clint & Rhonda Kaiser
Darell & JoAnn Lumaco
Vikki Mee & Steve Cox
Stan & Len Miller
Helen Noonan-Harnsberger
Lisa & Larry Norman
Brennan Randel & Matthew Corwin
Lael & Forrest Seitz
Richard Siegel
Testech, Inc.
Carla Velders, in memory of G. Coulson-Velders

STEWARD \$250 AND ABOVE

Jeri Alcock, in honor of Scott & Brian Palmer
Anonymous (2)
Mick & Pauline Beard
Mark Brumley & Joyce Woods
Kirsten Carpentier
Stephanie & Morgan Chase
Tom Chau & Jessica Chou
Liz & Doug Fischer
Michael Fox & Debby Garman
Kari Fredheim
Bonnie Gilchrist
Bruce & Kathy Hanna
Sherry Lamoreaux & Paul Duchene
Elizabeth Manser
Heather & Eric Mash
Rebecca McAllister
Fran & Corky McReynolds
Montinore Estate
Marian & John Neumann
Marc Priebe
Alan & Meaghan Schmalz
Janica Stewart

Delbert & Donna Swanson
Technical Marketing Specialists, Inc.
K Marie Tyler
Ginny & Mark Watson
Jerry & Judy Willey

BELL CAPTAIN \$100 AND ABOVE

Anonymous (3)
Family of Arthur Barrows
Mary Jo & Jim Bartels
Thomas Bearden
Gregory Bruce
Carla Caesar & Nora King
Matthew Carlson
Candace Chinick
Kenny Chinn
Cornelius Veterinary Clinic, PC
Matt Crile & Kerry Esson
Nancy Cullers
Margaret Devereaux
Kathy & Ted Fuller
Paul & Becky Gerlach
Beth Godfrey
Julian Gray & Barb Epstien
Cassie Greer & Danny Palmer
Marilyn Grendele
Mary Michelle Hamm
Gregory & Laurie Hannon
Marie Hatton
Lisa & Eric Havelind
John & Sherry Hayes
Charlotte Headrick
Ellen Hinds
Jamie Hoffman, in honor of Vicki Mee & Steve Cox
Keren Hoover
Arianne Jacques & Jason Myers
Barbara Johnson
Jim Kalvelage
Bruce & Maureen Klein
Laurel Lahmers
Lorna Laurie
Beth & Evan Lewis
Sia Lindstrom
Tom & Sue Linkhart
Carol Loughner
Gene & Judy Lynch
Una & Keith Maher
Trisha Meeker
Jeffrey Morgan
Dietrich Neuman & Lisa Williams
Anita Osterhaug & Job Rabinowitz
Harriet Ottaviano
Michael & Sondra Plester
Carol Reich
Rice NW Museum of Rocks & Minerals
Gary, Tina, & Caitlin Richard
Jan Richardson
Lisa J. Rowley
Winston Saunders & Sara Stamey
Peter Schuyler
Bryan & Paula Seid
Robin & Barbara Scott
Don & Linda Sinclair
Lawrence Siulagi
Donna Smith
Irvine & Sherri Smith
Janeen & Jordan Sollman
Gerda Sylvie
Gary Taliaferro
Ermine & Susan Todd

Bruce Ulrich
Kaye Van Valkenburg & David Maier
Marla Via
Kail & Amanda Walker
Ward/Davis Associates
Tom Wharton
William Wuertz
Bob & Kris Zorko

BELL HOP \$25 AND ABOVE

Anonymous, in honor of Cassie Greer
Dave Alford
Enrique Andrade
Anonymous (2)
Tina Arth
Naomi Ballard
Phillip J. Berns & Jessi Walters
Jeff Bull & Tania Perry
Sue Cameron
Donald Campbell & Lisa Thompson
Margaret Collins
Patricia Collins
Martin Conley
Robert Dupuy
Elaine Elliott
Janet Feldman
Michael & Jayne Gallagher
Jason Gavigan
Will Gilliland
Andrew Glew & Rhonda Patten
Juan Carlos Gonzalez
Larry & Ann Greer
Beth Hutchins
Deb Kadish
David & Gail Klingerman
John Knowles
Rae Knowles
Brian Lightcap
Vicki Lollis
Sandy Lucas
Kent & Kim Mallory
Christine Martell
Judith Mar-Zaleski
James McNally
Anna Metz
Amy Mihelich
Vickie J. Miller
Melissa Moore
Gian Paul Morelli
Hillary & Kjell Ostlund
Scott & Brian Palmer
Kari Parkinson
Burton & Carol Pattee
Danielle Restuccia & Jackson Ross
Bob Rineer & Debbie Thomas
Rebecca Roberts
Silverna & Raymond Scott
William Scott
Sarah Searles
Michael & Elizabeth Smith
The Standard
Paula Stewart
Grant Thackray
Kristen Van Kranenburgh
Liz & Patrick Voelker
Kail & Amanda Walker
Fred Wallace & Dana Sweet
Fred Williams
Nathan Williams
Vickie Williams

2019 BURNS SUPPER DONORS

Thanks to all of our donors who generously supported our operating fund at our 2019 Burns Supper.

\$1000 AND ABOVE
Sue & Pete Harris
Mike & Laura McMurray

\$250 AND ABOVE
Fred & Gayle Nachtigal
Jeff Kishlock & Anne Brennan

Jonathan Schlueter
Jack & Jan Whitehead

\$500 AND ABOVE
Carole Cotten-Figueiredo & John Figueiredo
Scott & Brian Palmer
Lael & Forrest Seitz

\$100 AND ABOVE
Janet & Michael English
Kathy Gaona
Mia Hocking
Linda & Brad Needham

\$25 AND ABOVE
Dale & Julie Case
Beth & Evan Lewis
Marc Priebe

SUSTAINING SUPPORT

The names listed below are our very first ever Bag&Baggage Sustaining Supporters - and you can join them! You probably know the model from OPB: these are monthly donations, in smaller amounts, that provide a nonprofit like Bag&Baggage with ongoing, consistent, and predictable support year-round. Donations like this mean that we can plan better: they help eliminate cash-flow challenges, and they allow us to leverage larger donations and grants from trusts and foundations.

For more information, or to become a B&B Sustaining Supporter, email Artistic Director Cassie Greer at cassie@bagnbaggage.org

Anonymous	Keren Hoover	Lisa J Rowley
Enrique Andrade	Tom & Gayle Hughes	Winston Saunders & Sara Stamey
Alice Bartelt	Arianne Jacques & Jason Myers	Silverna & Raymond Scott
Mick & Pauline Beard	Annemarie & John Jacques	Bryan & Paula Seid
Thomas Bearden	Clint & Rhonda Kaiser	Richard Siegel
Gregory Bruce	Bruce & Maureen Klein	Jan Simmons
Steve & Joan Callaway	Laurel Lahmers	Don & Linda Sinclair
Dale & Julie Case	Sherry Lamoreaux & Paul Duchene	Lawrence Siulagi
Stephanie & Morgan Chase	Tom Chau & Jessica Chou	Janica Stewart
Carl Citek & Patricia Logan	Beth & Evan Lewis	Donna & Delbert Swanson
Matthew Corwin & Brennan Randel	Eric & Diane Lewis	Fred Wallace & Dana Sweet
Nancy Cullers	Arianne Lightcap	Dr. Elizabeth Tavares
Nan Frederick	Vicki Lollis	Susan & Ermine Todd
Kari Fredheim	Christine Martell	Bill & Rita Tomison
Kathy & Ted Fuller	Corky & Fran McReynolds	K. Marie Tyler
Kathy Gaona	Vikki Mee & Steve Cox	Kristen Van Kranenburgh
Bonnie Gilchrist	Montinore Estate	Carla Velders
Julian Gray & Barb Epstien	Gayle & Fred Nachtigal	Kail & Amanda Walker
Steve & Marilyn Gray	Linda & Brad Needham	Ginny & Mark Watson
Marilyn Grendele	Anita Osterhaug & Job Rabinowitz	Brian Whitney
Cassie Greer & Danny Palmer	Harriet Ottaviano	Vickie Williams
Sue & Pete Harris	Scott & Brian Palmer	Mark Brumley & Joyce Woods
Marie Hatton	Carol Reich	Bob & Kris Zorko
John & Sherry Hays	Gary, Tina, & Caitlin Richard	

SCOTT PALMER FOUNDER'S FUND DONORS

Thank you to all of our donors who generously supported the Scott Palmer Founder's Fund, a dedicated fund that will support future productions of the kinds of adaptations that have made B&B nationally recognized.

Dave Alford	Mary Michelle Hamm	Leonard A. & Susan Magazine - Real Estate, Inc.
Tina Arth	Pete & Sue Harris	Una & Keith Maher
Carol A. Beauchamp	Ralph & Marilynn Helzerman	Liz Manser
Sara Behrman & F.X. Rosica	Lane Hickey	Mike & Laura McMurray
Kirsten Carpentier	Scott & Sonya Hoatson	Fred & Gayle Nachtigal
Dale & Julie Case	Andrew Hoffmann & Linda Morrisson	Linda & Brad Needham
Karl Citek & Patricia Logan	Larua Hoover	Marc Priebe
Carole Cotten-Figueiredo & John Figueiredo	Tom & Gayle Hughes	Peter Schuyler
Liz & Doug Fischer	Annemarie & John Jacques	Lael & Forrest Seitz
Renee Fowler	Jeff Kishlock & Anne Brennan	Jan Simmons
Kathy Gaona	Rae Knowles	Irvine & Sherri Smith
Andrew Glew & Rhonda Patten	Lorna Laurie	Bill & Rita Tomison
Beth Godfrey	Sia Lindstrom	K. Marie Tyler
	Darell & JoAnn Lumaco	Tom Wharton

COMING SOON TO



350.ORG WASHINGTON COUNTY:
TO THE ENDS OF THE EARTH

MAY 25
2 PM

BAG&BAGGAGE PRODUCTIONS:
THE HELPFUL LITTLE FOX
FIXES THE FOREST GRIMM

**MAY 31-
JUNE 9**

TONY STARLIGHT:
THE TONY STARLIGHT VARIETY SHOW

JUNE 14
7:30 PM

TONY STARLIGHT:
SINATRA BY STARLIGHT

JUNE 15
7:30 PM

BAG&BAGGAGE PRODUCTIONS:
VIVA L'ITALIA! GALA & AUCTION

JUNE 22
5 PM

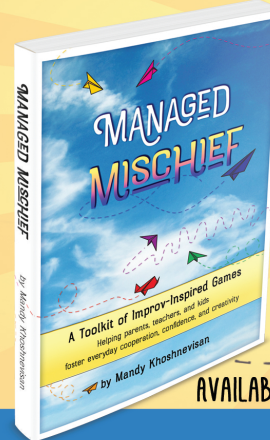
CABARET VARIÉTÉ:
SIZZLING SUMMERTIME REVUE

JUNE 29
7:30 PM

BAGNBAGGAGE.ORG • 503 345 9590

ROYA PUBLICATIONS SALUTES BAG&BAGGAGE FOR 14 YEARS
OF BRINGING THEATRICAL EXCELLENCE TO THE COMMUNITY.

EVERYDAY CREATIVE GAMES FOR KIDS AND THEIR ADULTS.



MANAGED MISCHIEF

BY MANDY KHOSHNEVISAN



A TOOLKIT OF
IMPROV-INSPIRED GAMES

AVAILABLE NOW, IN TRADE PAPERBACK & E-BOOK!

FIND OUT MORE AT: ROYAPUBLICATIONS.COM

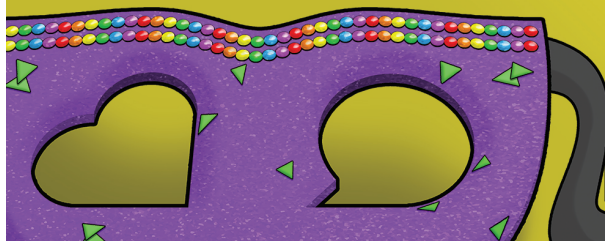


DESIGN
PRINT
DISPLAY
INSTALL
PRODUCE
CREATE GREAT THINGS.

SPONSORS & PARTNERS



PRESENTING OUR 19/20 SEASON



MUCH ADO ABOUT NOTHING

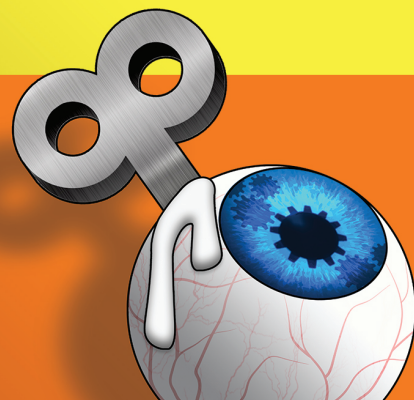
BY WILLIAM SHAKESPEARE • ADAPTED BY GORDON BARR

JULY 11-28 • 2019

OCTOBER 10-27 • 2019

A CLOCKWORK ORANGE

BY ANTHONY BURGESS



KEN LUDWIG'S THE GAME'S AFOOT

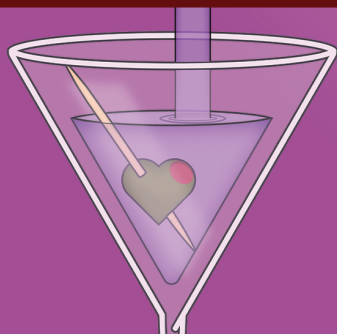
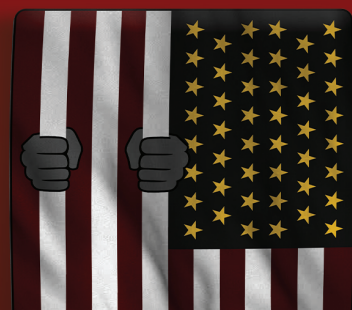
OR HOLMES FOR THE HOLIDAYS

DECEMBER 5-23 • 2019

MARCH 5-22 • 2020

THE MEASURE OF INNOCENCE

BY ANYA PEARSON • ADAPTED FROM WILLIAM SHAKESPEARE'S
MEASURE FOR MEASURE



NOËL COWARD'S FALLEN ANGELS

APRIL 30-MAY 17 • 2020

Purchase season passes or individual tickets and find more information about our season at

BAGNBAGGAGE.ORG • 503 345 9590